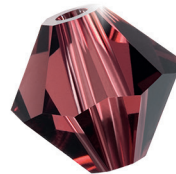




# INNOVATIONS 2014



PRECIOSA® COMPONENTS





## PRECIOSA® GENUINE CZECH CRYSTAL™

► For centuries, Bohemia, a region of the Czech Republic, has been known for its crystal. It was here that the art of crystal cutting was perfected. Delicate elegance, captivating sparkle and exceptional brilliance are the distinctive characteristics that make Preciosa® GENUINE CZECH CRYSTAL™ an internationally recognized symbol of quality.

**The Preciosa® GENUINE CZECH CRYSTAL™ trademark is a guarantee of the finest quality, 100% Czech-made product available only from Preciosa.**



## ENVIRONMENT

➡ Preciosa is the European company that believes in supporting the preservation of the environment. We strive to ensure safety for those who use our products. We enforce environmentally safe working conditions and utilize ecologically responsible technologies. Our production is regularly tested by accredited laboratories in order to ensure their compliance with all major crystal standards and legislation below:

- ✓ **ASTM F2923-11\***  
Standard Specification for Consumer Product Safety for Children's Jewellery
- ✓ **ASTM F963-11\***  
Standard Consumer Safety Specification for Toy Safety
- ✓ **CPSC 16 CFR 1303\***  
Lead in a Surface Coating
- ✓ **CPSIA\***  
Consumer Product Safety Improvement Act
- ✓ **Safety of Toys**  
Heavy metal migration limits according to Directive 2009/48/EC
- ✓ **OEKO-TEX Standard 100**  
Product Class II
- ✓ **REACH**  
Registration, Evaluation, Authorisation and Restriction of Chemical Substances
- ✓ **RoHS\*\***  
Restriction on Use of Hazardous Substances

\* Requirements of this standard are fully met by our lead-free MAXIMA by Preciosa® product line only.

\*\* Except Citrine, Sun, Hyacinth, Coral, Lt. Siam, Siam, Garnet

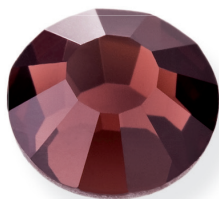
---

“ *Indian Pink & Burgundy:  
Two stylish colours for terrific designs!* ”

## OUR LATEST INNOVATIONS GO HAND IN HAND WITH THE LATEST COLOUR TRENDS

► Preciosa presents a luscious red Burgundy and vibrant Indian Pink! They will underline the uniqueness of any creation and perfectly match the latest colour trends for the Spring/Summer 2015 season.





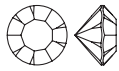
## Indian Pink (No. 70040)

The youthful Indian Pink, with its fresh and airy hue, expands our offering of the ever-popular pinks.



## Burgundy (No. 90100)

The luxuriously rich Burgundy is confident and individualistic, ideal for emphasizing originality while remaining darkly elegant.



Both Indian Pink and Burgundy colours are available in MC Chaton MAXIMA (Art. 431 11 615), MC Chaton Rose VIVA12® (Art. 438 11 612) and MC Bead Rondell (Art. 451 69 302).



# MC Chaton MAXIMA | ART. 431 11 615

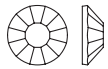
COLOUR		SS	4	4.5	5	5.5	6	6.5	7	7.5	8	8.5	9	9.5
 <b>Indian Pink</b>   70040	(DF)		●	●	●	●	●	●	●	●	●	●	●	●
 <b>Burgundy</b>   90100	(DF)		●	●	●	●	●	●	●	●	●	●	●	●

		SS	10	11	11.5	12	16	19	24	29	34	39
 <b>Indian Pink</b>   70040	(DF)		●	●	●	●	●	●	●	●	●	●
 <b>Burgundy</b>   90100	(DF)		●	●	●	●	●	●	●	●	●	●



● - New | ● - In standard offer



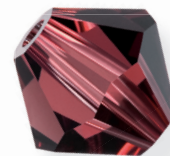
MC Chaton Rose VIVA12® | ART. 438 11 612

COLOUR	SS	6	8	10	16	20	30
Indian Pink   70040 (S)	●	●	●	●	●	●	●
Indian Pink AB   70040 (TC) (S)	●	●	●	●	●	●	●
Indian Pink   70040 (HF)	●	●	●	●	●	●	●
Indian Pink AB   70040 (TC) (HF)	●	●	●	●	●	●	●
Burgundy   90100 (S)	●	●	●	●	●	●	●
Burgundy AB   90100 (TC) (S)	●	●	●	●	●	●	●
Burgundy   90100 (HF)	●	●	●	●	●	●	●
Burgundy AB   90100 (TC) (HF)	●	●	●	●	●	●	●



MC Bead Rondell | ART. 451 69 302

COLOUR	SS	4	5	6
Indian Pink   70040	●	●	●	●
Indian Pink AB   70040 (HC)	●	●	●	●
Indian Pink AB 2x   70040 (FC)	●	●	●	●
Burgundy   90100	●	●	●	●
Burgundy AB   90100 (HC)	●	●	●	●
Burgundy AB 2x   90010 (FC)	●	●	●	●



---

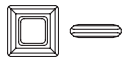
*“ Whatever shape, whatever size – style it with Preciosa!*

## BRAND NEW FANCY STONE AND NEW SIZES OF YOUR FAVORITE SEW-ON STONES!

► Please welcome the MC Square Ring – an entirely new addition to our Fancy Stones product range! And, based on your feedback, we have also broadened our selection of sew-on stones: we now offer the Pear, Oval, Rectangle and Triangle in the “missing” large sizes. All four of these new sizes come in Crystal, Crystal AB and Crystal Honey.

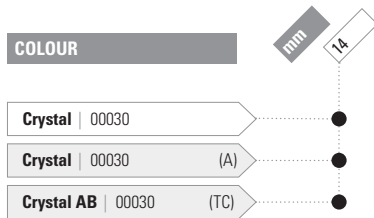






## MC Square Ring | ART. 435 93 651

The simple yet elegant square never goes out of style. Preciosa is introducing this traditional yet versatile fancy stone in a 14mm version. The MC Square Ring will be available in both Crystal and Crystal AB.



● – New | ● – In standard offer



## MC Oval 301 2H | ART. 438 62 301

The classical MC Oval now also includes the larger 24x17mm size. All three sizes are available in Crystal, Crystal AB and Crystal Honey.

COLOUR		mm	10x7	16x11	24x17
Crystal	00030 (S)	●	●	●	
Crystal AB	00030 (TC) (S)	●	●	●	
Crystal Hon	00030 (TC) (S)	●	●	●	



## MC Pearshape 301 2H | ART. 438 67 301

Preciosa completes the offering for this two-holed Pearshape with the large 28x17mm size. Available in Crystal, Crystal AB and Crystal Honey.

COLOUR		mm	12x7	18x10.5	28x17
Crystal	00030 (S)	●	●	●	
Crystal AB	00030 (TC) (S)	●	●	●	
Crystal Hon	00030 (TC) (S)	●	●	●	



● – New | ● – In standard offer



## MC Rectangle 301 2H | ART. 438 76 301

Due to popular demand, we have added a larger Rectangle to our Preciosa sew-on product line. The MC Rectangle is available in Crystal, Crystal AB and Crystal Honey.

COLOUR		mm	18x13	25x18
Crystal	00030 (S)	●	●	●
Crystal AB	00030 (TC) (S)	●	●	●
Crystal Hon	00030 (TC) (S)	●	●	●



## MC Triangle 301 3H | ART. 438 72 301

Last, but by no means least, is the three-holed Triangle to which we have also added a larger size as a result of your inquiries. Like its smaller cousin, this 22mm version comes in Crystal, Crystal AB and Crystal Honey.

COLOUR		mm	16	22
Crystal	00030 (S)	●	●	●
Crystal AB	00030 (TC) (S)	●	●	●
Crystal Hon	00030 (TC) (S)	●	●	●



**NOTE:**

- (DF) – Dura-Foiling™ Layer
- (A) – Aluminium Layer
- (S) – Silver Foiling
- (HF) – Hot-fix Layer
- (HC) – Half Coating
- (TC) – Top Coating
- (FC) – Full Coating


---

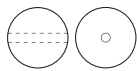
“ *Light up your life with Crystal Neoncolour Pearls!* ”

## WE HAVE EXTENDED OUR STANDARD OFFER OF PEARLS WITH FIVE NEONCOLOURS

► Bright and beautiful, the new Crystal Neoncolour Pearls take you to the next generation of exciting and hip fashion wear! Unleash a whole new freshness with our effervescent Lemon, Sun, Sweet, Lilac and Sky Blue neon shades. Use them with unlimited panache to give your designs a dazzling edge!

### Colours

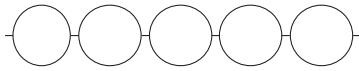
-  Crystal Neon Lemon  
78300
-  Crystal Neon Sun  
79100
-  Crystal Neon Sweet  
77600
-  Crystal Neon Lilac  
72600
-  Crystal Neon Sky Blue  
76500



## Pearl Round | ART. 131 10 011

COLOUR	4 mm	5 mm	6 mm	8 mm	10 mm	12 mm
Crystal Neon Lemon   78300	●	●	●	●	●	●
Crystal Neon Sun   79100	●	●	●	●	●	●
Crystal Neon Sweet   77600	●	●	●	●	●	●
Crystal Neon Lilac   72600	●	●	●	●	●	●
Crystal Neon Sky Blue   76500	●	●	●	●	●	●

## Round Pearls Strand | ART. 132 10 011



COLOUR	4 mm	5 mm	6 mm	8 mm	10 mm	12 mm
Crystal Neon Lemon   78300	●	●	●	●	●	●
Crystal Neon Sun   79100	●	●	●	●	●	●
Crystal Neon Sweet   77600	●	●	●	●	●	●
Crystal Neon Lilac   72600	●	●	●	●	●	●
Crystal Neon Sky Blue   76500	●	●	●	●	●	●

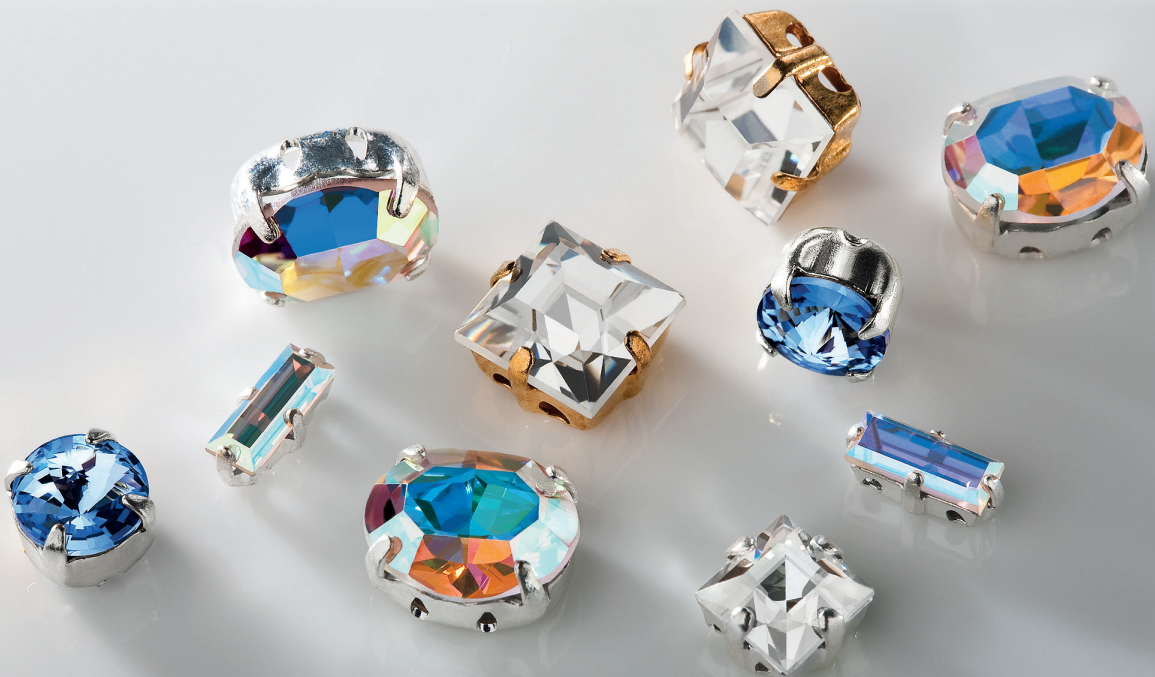
● – New | ● – In standard offer

---

*'' Step out in style with our new Sew-on Stones in Settings!*

## INTRODUCING THE NEW PRECIOSA SEW-ON STONES IN SETTINGS

► All new for the 2014 season are the Square, Baguette, Rivoli and Oval in a setting. Now you can create and easily sew-on spectacularly sparkling decorations to any garment or fashion accessory!



## Stones in Settings

### MC Navette, Sew-on

Art.	Plating	Size of stones
MM (millimetre)		
7192 9046	/xx	8 × 4
7192 9056	/xx	10 × 5
7192 9048	/xx	15 × 7

### MC Baguette, Sew-on

Art.	Plating	Size of stones
MM (millimetre)		
7192 9090	/xx	7 × 3

### MC Pearshape, Sew-on

Art.	Plating	Size of stones
MM (millimetre)		
7192 9045	/xx	8 × 4.8
7192 9055	/xx	10 × 6
7192 9049	/xx	13 × 7.8

### MC Rivoli, Sew-on

Art.	Plating	Size of stones
MM (millimetre)		
7192 9045	/xx	29
7192 7088	/xx	34
7192 7089	/xx	39

### MC Square 211, Sew-on

Art.	Plating	Size of stones
MM (millimetre)		
7192 9204	/xx	4 × 4
7192 9042	/xx	6 × 6
7192 9038	/xx	8 × 8

### MC Oval, Sew-on

Art.	Plating	Size of stones
MM (millimetre)		
7192 9047	/xx	10 × 8

### Available Platings

Plating	Type
/00	raw
/01	silver
/02	gold



**Preciosa Customer Centre**  
Opletalova 3197  
466 67 Jablonec nad Nisou  
Czech Republic

**T** +420 488 115 555  
**F** +420 488 115 665  
**E** [info@preciosa.com](mailto:info@preciosa.com)  
[www.preciosa.com](http://www.preciosa.com)



PRECIOSA, the PRECIOSA Logo, GENUINE CZECH CRYSTAL and the GENUINE CZECH CRYSTAL Logo are trademarks of Preciosa, a.s.  
© 2014 Preciosa, a.s.  
4116610